

SOLÉ

POWER TILE™

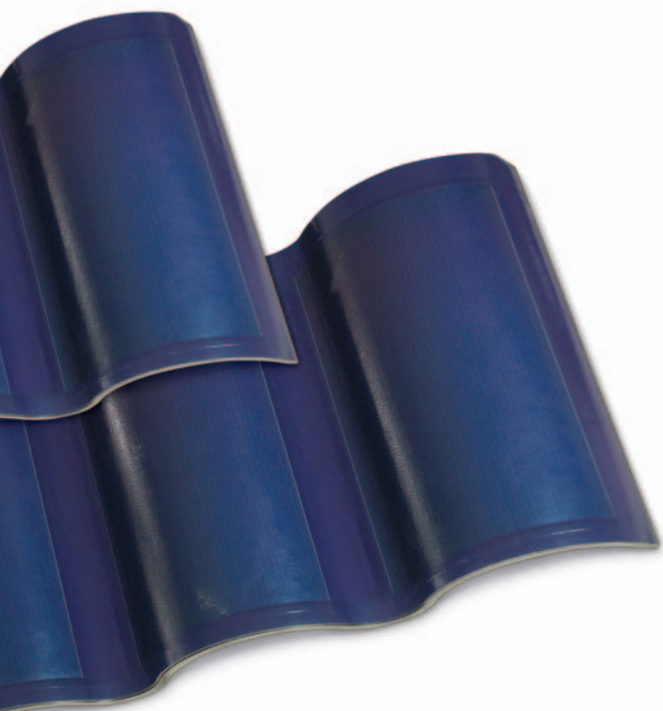
The beauty of sustainable energy.

Solé Power Tiles blend seamlessly with US Tile's authentic clay roofing systems to maintain a sophisticated and timeless roofline while delivering clean and sustainable solar energy.



US TILE
Powered By **SRS**
energy

SOLE POWER TILE™



SEAMLESS INTEGRATION

Solé Power Tiles integrate with a collection of US Tile's mission-style roof systems, applied on sloped roofs where aesthetics and longevity are paramount.

Authentic Two-Piece Mission Clay Tile
Affordable One-Piece S Clay Tile
Lightweight ClayLite®

COMPOSITION AND MATERIALS

Solé Power Tiles are constructed with durable and light-weight performance polymers, resulting in easy installation and handling. Thin-film solar cells imbedded within are engineered for superior performance in roofing applications with high-heat and dynamic lighting conditions.

SPECIFICATIONS

- 37.4" wide
- 18" long
- 30 tiles per 100 square-feet, with 3" lap
- 240 lbs. per square
- 500 watts per square

WARRANTY

US Tile products are covered by SRS Energy's Transferrable Limited Warranty.* SRS Energy rigorously tests Solé Power Tiles under harsh conditions for durability, including long-term UV stability, color fastness, wind resistance, electrical output, safety, and extreme mechanical stresses. SRS Energy materials are UL recognized as trusted and safe solar roofing components.

**Please refer to SRS Energy Limited Warranty for details.*

INSTALLATION RECOMMENDATIONS

Solé Power Tiles ship, stock, and install just like traditional clay roofing. Solé Power Tiles can only be installed by US Tile Solé Certified Contractors.



www.ustile.com
www.srsenergy.com

